

### RB Artwork and Print Specification

Trident Reference No:	RB484409
ZEN Ref:	<b>TR2254465</b>
Action:	<b>D</b>
Brand:	E45
Category:	Treatment
Segment Group:	Itch Relief
Segment:	Cream
Pack Size:	50g
Market/Country:	UK
Date:	29/11/21

RBH Contact: Jess Phipps

#### Artwork Type: BW Commercial

Component Code (2D if applicable):	<b>3207872</b>
2nd Component Code (if applicable):	<b>N/A</b>
Parent Technical Packaging Specification:	D0335111
Finished Goods Code:	<b>8077911</b>
Supply Point:	RB Hull
3rd Party Code:	N/A
Pharmacode No/NE:	011010(89)
Edgemark Position:	N/A

CAD Cam Ref:	E45-Crt-Ches-9477100A-41x37x142mm
Printer:	Multi Packaging Solutions (Leicester, UK)
Substrate:	Carton Board - White

Technical & Non Printing Items	
Cutter	Cutter 2 (if applicable)
Guides	Guides 2 (if applicable)

Colours (Carton)			
Process Yellow	PANTONE 162 C	PANTONE 661 C	PANTONE 3105 C
PANTONE 877 C	Mesh/Water Based Emulsion	Braille	

### BARCODE INFO

Barcode Type:	EAN 13
Barcode Number:	5000167023497
Magnification:	90%
Truncated By:	0.0 mm
Full Height:	23.4 mm
Bar Height (Smallest Bar):	20.6 mm
BWR:	40 microns
Encoded Data:	N/A



Please note that any low resolution paper Canon colour copies associated with this job should be referred to for content, layout and colour separation only.

UNDER NO CIRCUMSTANCES SHOULD THIS ARTWORK BE ALTERED WITHOUT PRIOR PERMISSION FROM TRIDENT.

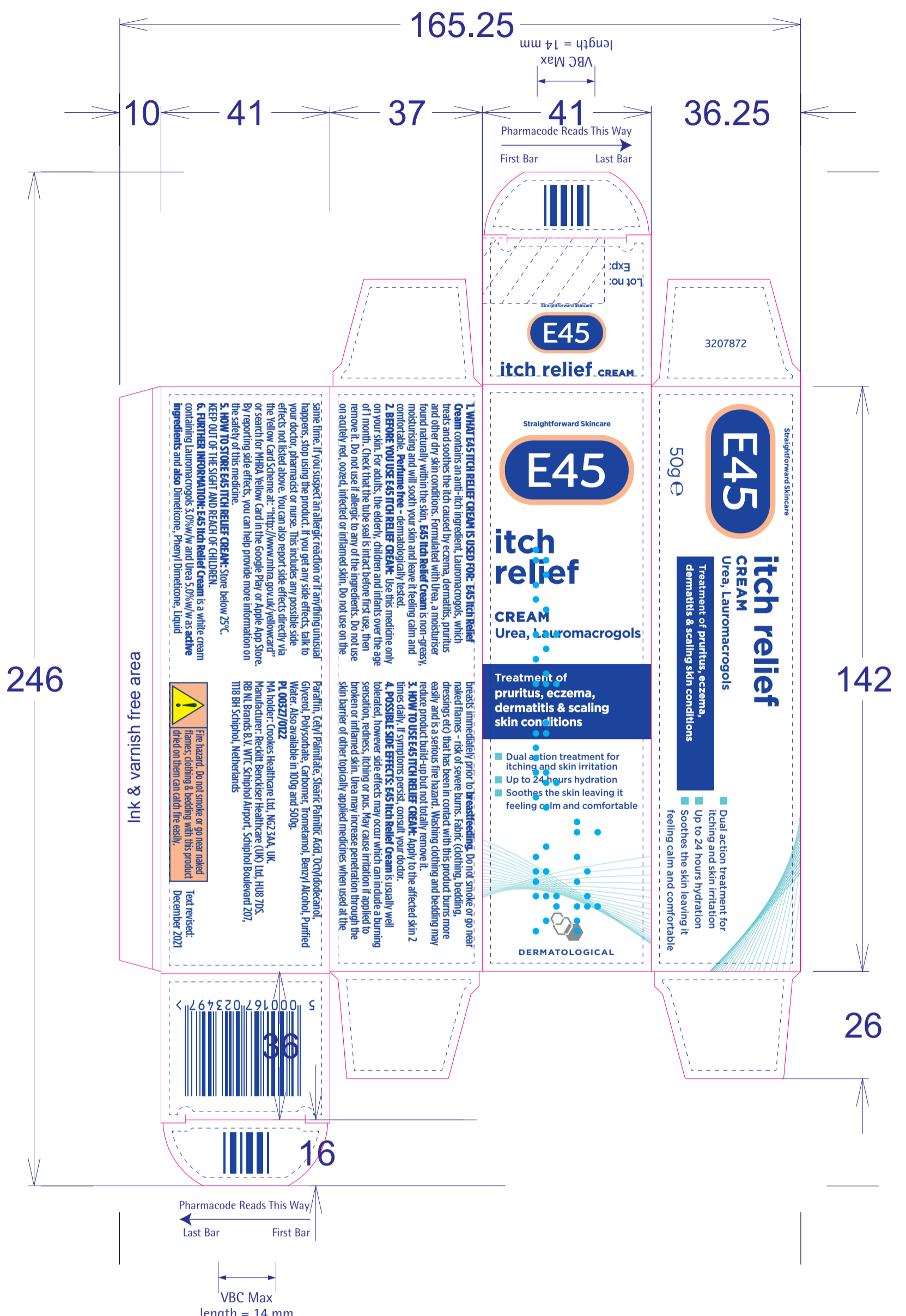
<b>STUDIO USE ONLY</b>	Soundari Saravanan	<b>v2.0</b>
Sm•Art check results:	G=2; O=1; R=0; - SS - 29/11/21 10:43:33	

TBR1169-D0335111 - English

E Number Sign 45 ITCH RELIEF CREAM

**CUSTOMER INFO:**  
Minimum Point Size = 3.00pt





246

Ink & varnish free area



Text revised: December 2021



36



Pharmacode Reads This Way  
Last Bar First Bar

VBC Max length = 14 mm

TBR1169-D0335111 - English

E Number Sign 45 ITCH RELIEF CREAM

**CUSTOMER INFO:**  
Minimum Point Size = 3.00pt

**RB Artwork and Print Specification**

Trident Reference No:	RB484409
ZEN Ref:	<b>TR2254465</b>
Action:	<b>D</b>
Brand:	E45
Category:	Treatment
Segment Group:	Itch Relief
Segment:	Cream
Pack Size:	50g
Market/Country:	UK
Date:	29/11/21

RBH Contact: Jess Phipps

**Artwork Type: BW Commercial**

Component Code (2D if applicable):	<b>3207872</b>
2nd Component Code (if applicable):	<b>N/A</b>
Parent Technical Packaging Specification:	D0335111
Finished Goods Code:	<b>8077911</b>
Supply Point:	RB Hull
3rd Party Code:	N/A
Pharmacode No/NE:	011010(89)
Edgemark Position:	N/A

CAD Cam Ref:	E45-Crt-Ches-9477100A-41x37x142mm
Printer:	Multi Packaging Solutions (Leicester, UK)
Substrate:	Carton Board - White

<b>Technical &amp; Non Printing Items</b>	
Cutter	Cutter 2 (if applicable)
Guides	Guides 2 (if applicable)

**Colours (Carton)**

Process Yellow	PANTONE 162 C	PANTONE 661 C	PANTONE 3105 C
1 LTH	2 LTH	3 LTH	4 LTH
PANTONE 877 C	Mesh/Water Based Emulsion	Braille	
5 LTH	6 LTH	7 LTH	

**BARCODE INFO**

Barcode Type:	EAN 13
Barcode Number:	5000167023497
Magnification:	90%
Truncated By:	0.0 mm
Full Height:	23.4 mm
Bar Height (Smallest Bar):	20.6 mm
BWR:	40 microns
Encoded Data:	N/A

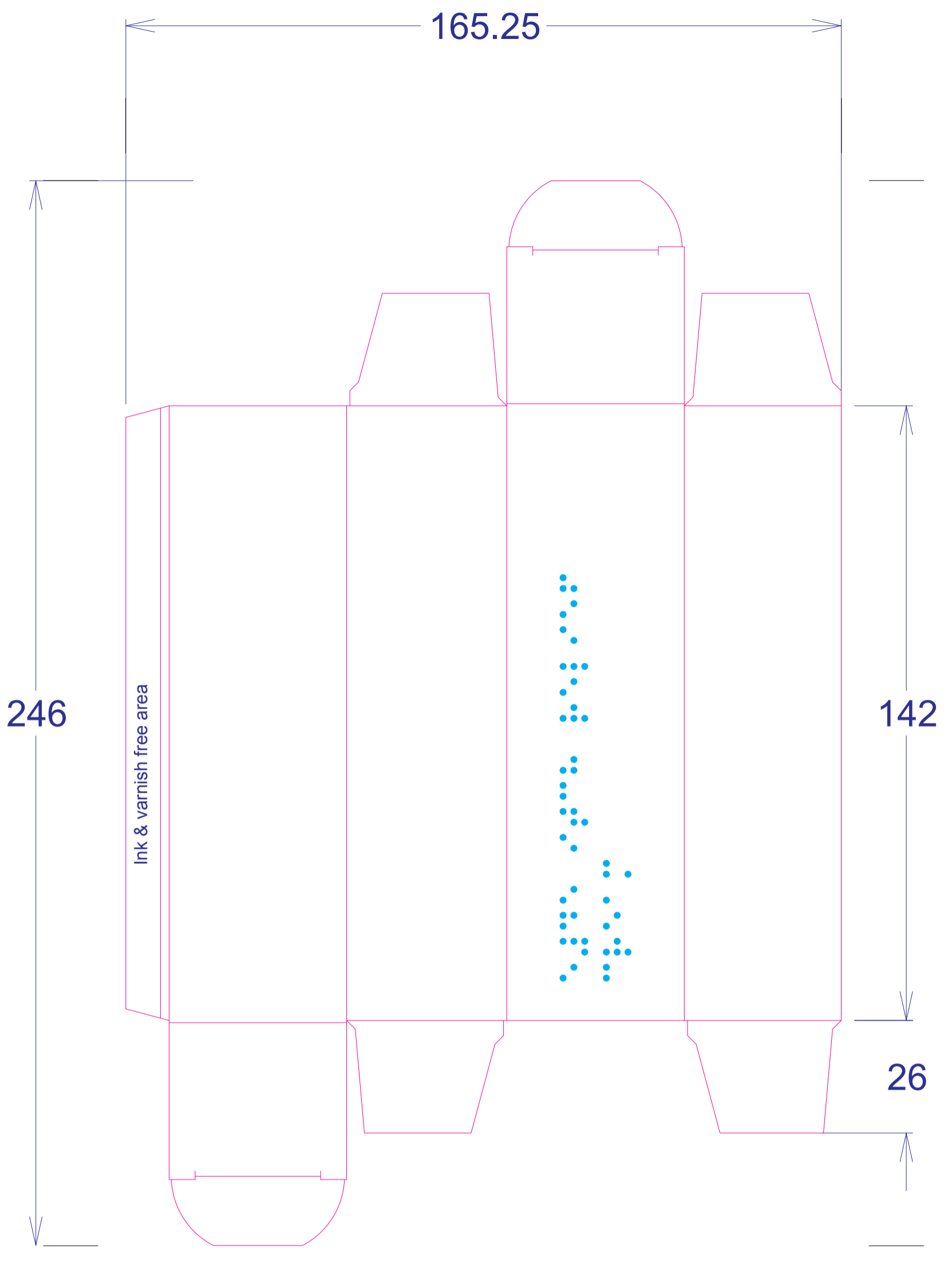


Please note that any low resolution paper Canon colour copies associated with this job should be referred to for content, layout and colour separation only.

UNDER NO CIRCUMSTANCES SHOULD THIS ARTWORK BE ALTERED WITHOUT PRIOR PERMISSION FROM TRIDENT.

<b>STUDIO USE ONLY</b>	Soundari Saravanan	<b>v2.0</b>
Sm•Art check results:	G=2; O=1; R=0; - SS - 29/11/21 10:43:33	





### RB Artwork and Print Specification

Trident Reference No: RB484409  
 ZEN Ref: **TR2254465**  
 Action: **D**  
 Brand: E45  
 Category: Treatment  
 Segment Group: Itch Relief  
 Segment: Cream  
 Pack Size: 50g  
 Market/Country: UK  
 Date: 29/11/21

RBH Contact: Jess Phipps

#### Artwork Type: **BW Commercial**

Component Code (2D if applicable): **3207872**  
 2<sup>nd</sup> Component Code (if applicable): **N/A**  
 Parent Technical Packaging Specification: D0335111  
 Finished Goods Code: **8077911**  
 Supply Point: RB Hull  
 3rd Party Code: N/A  
 Pharmacode No/NE: 011010(89)  
 Edgemark Position: N/A

CAD Cam Ref: E45-Crt-Ches-9477100A-41x37x142mm  
 Printer: Multi Packaging Solutions (Leicester, UK)  
 Substrate: Carton Board - White

Technical & Non Printing Items  
 ■ Cutter ■ Cutter 2 (if applicable)  
 ■ Guides ■ Guides 2 (if applicable)

Colours (Carton)

Process Yellow 1 LTH	PANTONE 162 C 2 LTH	PANTONE 661 C 3 LTH	PANTONE 3105 C 4 LTH
PANTONE 877 C 5 LTH	Non-Water Based Emulsion 6 LTH	Braille 7 LTH	

### BARCODE INFO

Barcode Type: EAN 13  
 Barcode Number: 5000167023497  
 Magnification: 90%  
 Truncated By: 0.0 mm  
 Full Height: 23.4 mm  
 Bar Height (Smallest Bar): 20.6 mm  
 BWR: 40 microns  
 Encoded Data: N/A



Please note that any low resolution paper Canon colour copies associated with this job should be referred to for content, layout and colour separation only.

UNDER NO CIRCUMSTANCES SHOULD THIS ARTWORK BE ALTERED WITHOUT PRIOR PERMISSION FROM TRIDENT.

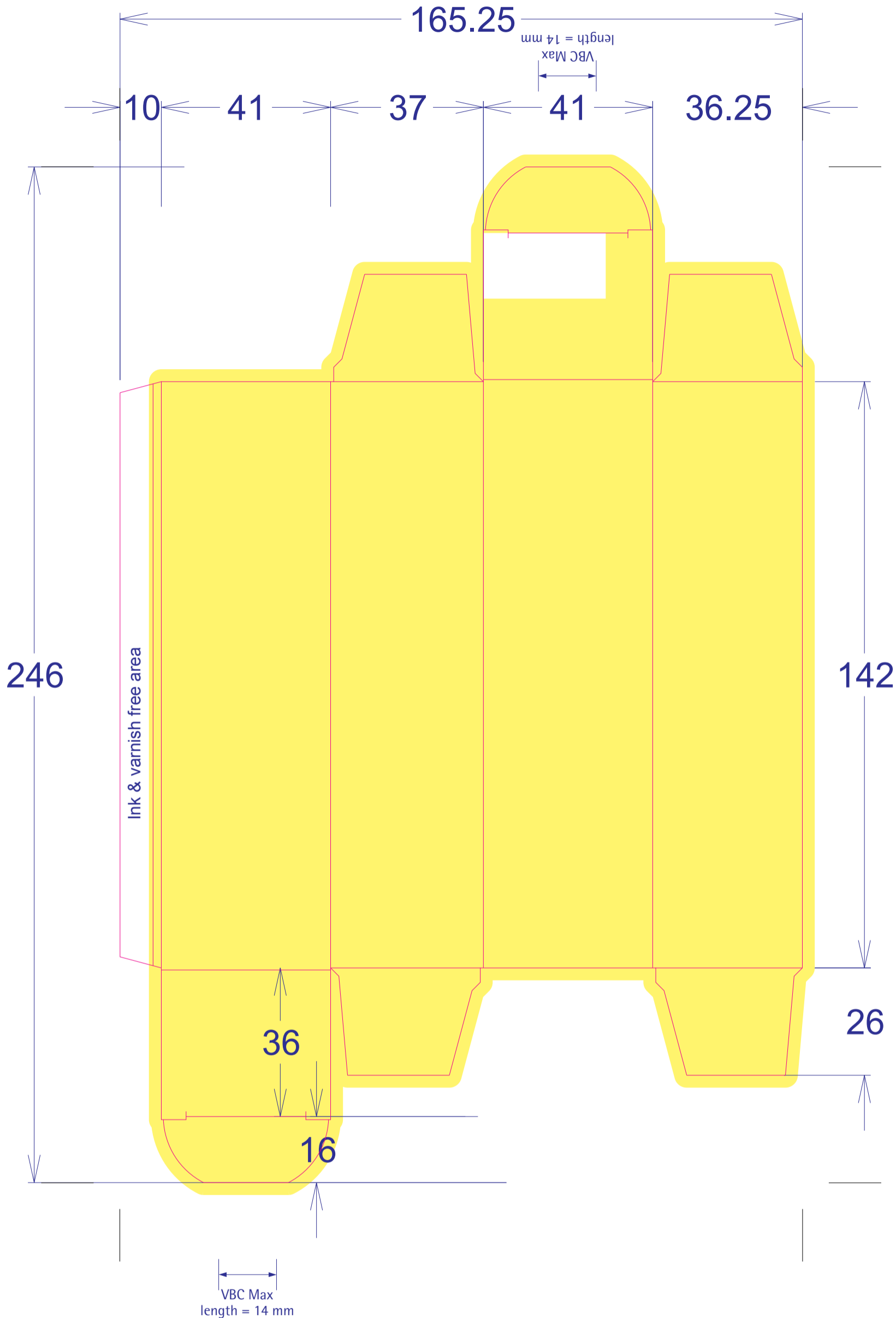
STUDIO USE ONLY Soundari Saravanan v2.0  
 Sm•Art check results: G=2; O=1; R=0; - SS - 29/11/21 10:43:33

TBR1169-D0335111 - English

**E Sign 45 ITCH RELIEF CREAM**

**CUSTOMER INFO:**  
 Minimum Point Size = 3.00pt





### RB Artwork and Print Specification

Trident Reference No: RB484409  
 ZEN Ref: **TR2254465**  
 Action: **D**  
 Brand: E45  
 Category: Treatment  
 Segment Group: Itch Relief  
 Segment: Cream  
 Pack Size: 50g  
 Market/Country: UK  
 Date: 29/11/21

RBH Contact: Jess Phipps

#### Artwork Type: **BW Commercial**

Component Code (2D if applicable): **3207872**  
 2nd Component Code (if applicable): **N/A**  
 Parent Technical Packaging Specification: D0335111  
 Finished Goods Code: **8077911**  
 Supply Point: RB Hull  
 3rd Party Code: N/A  
 Pharmacode No/NE: 011010(89)  
 Edgemark Position: N/A

CAD Cam Ref: E45-Crt-Ches-9477100A-41x37x142mm  
 Printer: Multi Packaging Solutions (Leicester, UK)  
 Substrate: Carton Board - White

Technical & Non Printing Items  
 ■ Cutter ■ Cutter 2 (if applicable)  
 ■ Guides ■ Guides 2 (if applicable)

Colours (Carton)			
Process Yellow 1 LTH	PANTONE 162 C 2 LTH	PANTONE 661 C 3 LTH	PANTONE 3105 C 4 LTH
PANTONE 877 C 5 LTH	Mesh/Water Based Emulsion 6 LTH	Braille 7 LTH	

### BARCODE INFO

Barcode Type: EAN 13  
 Barcode Number: 5000167023497  
 Magnification: 90%  
 Truncated By: 0.0 mm  
 Full Height: 23.4 mm  
 Bar Height (Smallest Bar): 20.6 mm  
 BWR: 40 microns  
 Encoded Data: N/A



Please note that any low resolution paper Canon colour copies associated with this job should be referred to for content, layout and colour separation only.

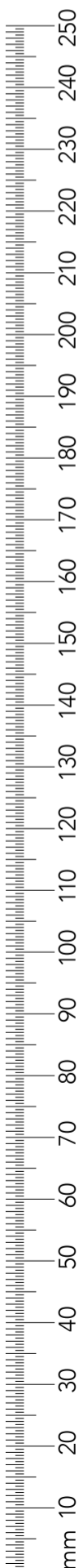
UNDER NO CIRCUMSTANCES SHOULD THIS ARTWORK BE ALTERED WITHOUT PRIOR PERMISSION FROM TRIDENT.

STUDIO USE ONLY Soundari Saravanan v2.0  
 Sm•Art check results: G=2; O=1; R=0; - SS - 29/11/21 10:43:33

TBR1169-D0335111 - English

E Number Sign 45 ITCH RELIEF CREAM

**CUSTOMER INFO:**  
 Minimum Point Size = 3.00pt



Production line		
Manufacturing site		
Pack Tech approver	1st 2nd	
Date		
Check Criteria	Details & Comments	Checks
Approvals		1st 2nd
Market Approval		
Regulatory Approval		
3rd Party Approval		
Technical Drawing/ Cutter ref no. & PPI component code		
PPI component code number/s correct on artwork?		
PPI component code number/s in correct position on artwork?		
Correct drawing for the production line?		
Profile shape & dimensions		
Graphics layout/orientation		
Unwind diagram (PPTD1022/1-20)		
Printable areas/bleed		
Varnish free areas		
Variable coding position & dimensions		
Varnish and print requirements		
Pre-printed headers (alignment and suitability)		
Embossing, Braille & Foil Blocking		
Separations on artwork		
Alignment within cutter		
Braille structure		
Verification Code Type; Pharma Code / 2D / OCV		
Bar sequence and/or number correct on artwork		
Bar sequence and/or number in correct position on artwork?		
Size (height, width, spacing, font)		
Direction of read		
Light margins and print free areas		
Colour		
Repeat distance (reeled material)		
Cross check related docs ie BOM		
Bar code Type; EAN, ITF, Code39, etc		
Magnification / width and height		
Colour (e.g. black print on white background)		
Light margins & indicators		
Bearer bars & H gauges (if required)		
Symbol grade (Pass = A,B,C; Action = D,F)		
Bar code number (human readable)		
Bar code number (encoded & hidden data)		
Confirm bar code number from source		
Cross check related docs (JDE/PID)		
Photo-electric cell mark / edge marks		
Present & per Tech drawing?		
Correct pitch?		
Additional markings		
e-mark, recycle logo etc		
Legend box (RB specification)		
Correct component code		
Correct D spec / has cutter changed?		
Correct printer / has printer changed?		
Correct Substrate		
A/W is set up appropriately for this substrate		
Edge mark details		
Pharmacode details		
Colours & print process		
Varnish		
Barcode information		
General details are correct		
Pass / Fail comments and Signature		
By approving the artwork referenced within this form I authorise it for release to the print supplier		
Additional Comments		

## RB Artwork and Print Specification

Trident Reference No: RB484409  
ZEN Ref: **TR2254465**  
Action: **D**  
Brand: E45  
Category: Treatment  
Segment Group: Itch Relief  
Segment: Cream  
Pack Size: 50g  
Market/Country: UK  
Date: 29/11/21

RBH Contact: Jess Phipps

### Artwork Type: BW Commercial

Component Code (2D if applicable): **3207872**  
2nd Component Code (if applicable): **N/A**  
Parent Technical Packaging Specification: D0335111  
Finished Goods Code: **8077911**  
Supply Point: RB Hull  
3rd Party Code: N/A  
Pharmacode No/NE: 011010(89)  
Edgemark Position: N/A

CAD Cam Ref: E45-Crt-Ches-9477100A-41x37x142mm  
Printer: Multi Packaging Solutions (Leicester, UK)  
Substrate: Carton Board - White

Technical & Non Printing Items  
■ Cutter ■ Cutter 2 (if applicable)  
■ Guides ■ Guides 2 (if applicable)

Colours (Carton)

Process Yellow 1 LTH	PANTONE 162 C 2 LTH	PANTONE 661 C 3 LTH	PANTONE 3105 C 4 LTH
PANTONE 877 C 5 LTH	Veriph-Water Based Emulsion 6 LTH	Braille 7 LTH	

## BARCODE INFO

Barcode Type: EAN 13  
Barcode Number: 5000167023497  
Magnification: 90%  
Truncated By: 0.0 mm  
Full Height: 23.4 mm  
Bar Height (Smallest Bar): 20.6 mm  
BWR: 40 microns  
Encoded Data: N/A



Please note that any low resolution paper Canon colour copies associated with this job should be referred to for content, layout and colour separation only.

UNDER NO CIRCUMSTANCES SHOULD THIS ARTWORK BE ALTERED WITHOUT PRIOR PERMISSION FROM TRIDENT.

STUDIO USE ONLY Soundari Saravanan v2.0  
Sm•Art check results: G=2; O=1; R=0; - SS - 29/11/21 10:43:33

